

EPS *Decorative Cornice*



Mould A Green Life
Solutions for EPS Decorative Products



INTRODUCTION

Hangzhou Epssole Technologies Co.,Ltd. is a private-owned enterprise located in Hangzhou, China. With over 10 years experience, the company is famed for its profession in R&D , manufacturing and sales of EPS machinery, EPS Accessories, EPS raw materials and EPS moulds, etc.

Epssole has been focusing on the cooperation with customers, supply of technical information, sharing of intelligence and installation of machinery as well as the promotion of automation and working efficiency so as to improve the company's competitiveness and realize mutual benefits. Epssole is sincerely looking forward to cooperate with all customers that have interests in our products and technical services. We are confident to provide high quality services for customers from all over the world.

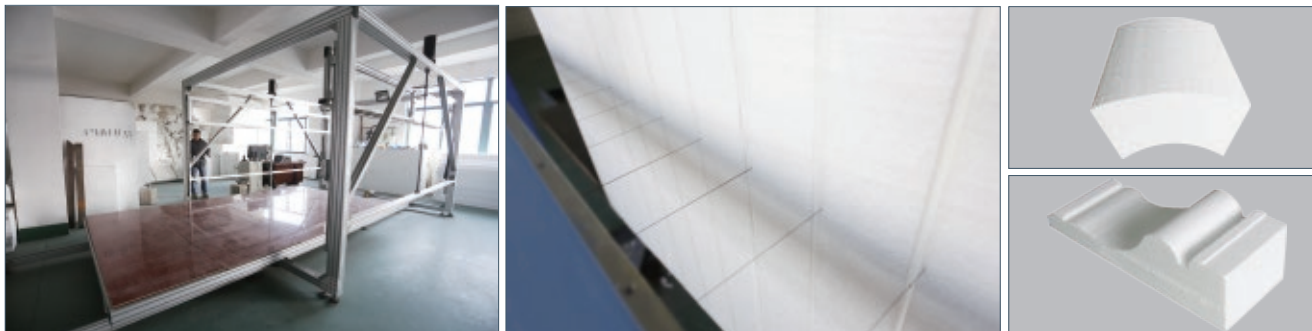
INNOVATION

ENVIRONMENTAL PROTECTION

EFFICIENT ENERGY-SAVING

Manufacturing Process

Cutting



Concrete Mixing



Coating



Trimming



CNC Cutting Machine

Products

• QG-01



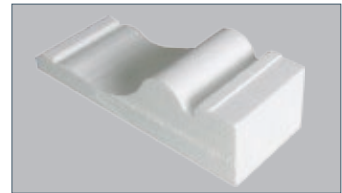
• QG-02



• QG-03



• QG-04



TECHNICAL DATA

Model	QG-01	QG-02	QG-03	QG-04
Max. cuttable foam dimension	2500*1300*1300mm	2500*1500*1300mm	2000*1200*1200mm	2000*1200*1200mm
Cutting accuracy	±1mm	±1mm	±1mm	±1mm
Max. linkable wires	12 Pcs	30 Pcs	25 Pcs	25 Pcs
Max. power consumption	5KVA	10KVA	10KVA	10KVA

Cutting & Coating Integral Machine

• Rome Pillar Cutting & Coating Integral Machine

QY-01



• Arc Cutting & Coating Integral Machine

QH-01



• Carving Machine


DK-01



Concrete Mixer

● Single Barrel Centrifugal Mixer	● Wet-Mixed Double Stage Mixer without Emissions	● Wet-Mixed Dual-Use Mixer	● Double Stage Circular Mixer
JB-3-300	JB-1-20	JB-G-50	JB-15050
			

Coating Machine

● Wet-Mixed Modular Single Barrel Mixer & Coating System	● Combinational Mixing & Coating System	● Dry-Mixed Combinational Circular Coating System
CS-02	CS-03	CS-04
		
● Dry-Mixed Combinational Double Stage Mixing & Coating System (Environment-Friendly)	● Coating Machine	
CS-05	CS-06	
		

Min. & Max. Block Size:
(30mm-1200mm) x (30mm-600mm)

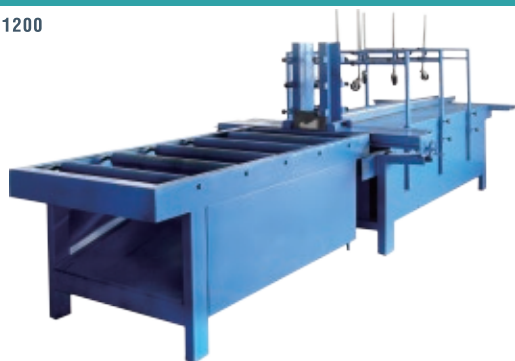
Trimming Machine

● DX-01



● Common Size Foam Coating Machine

GJ-1200

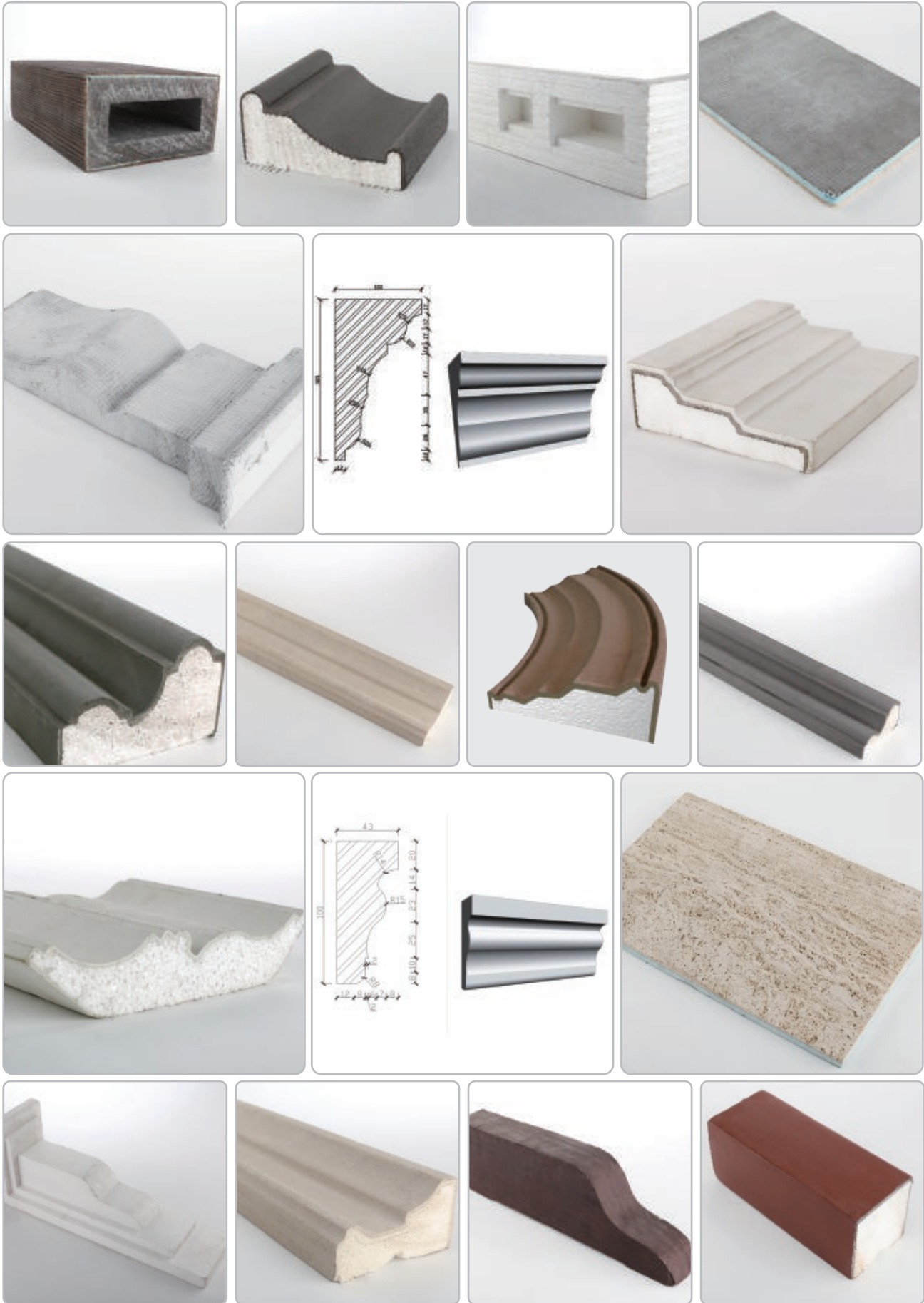


● Large Size Foam Coating Machine

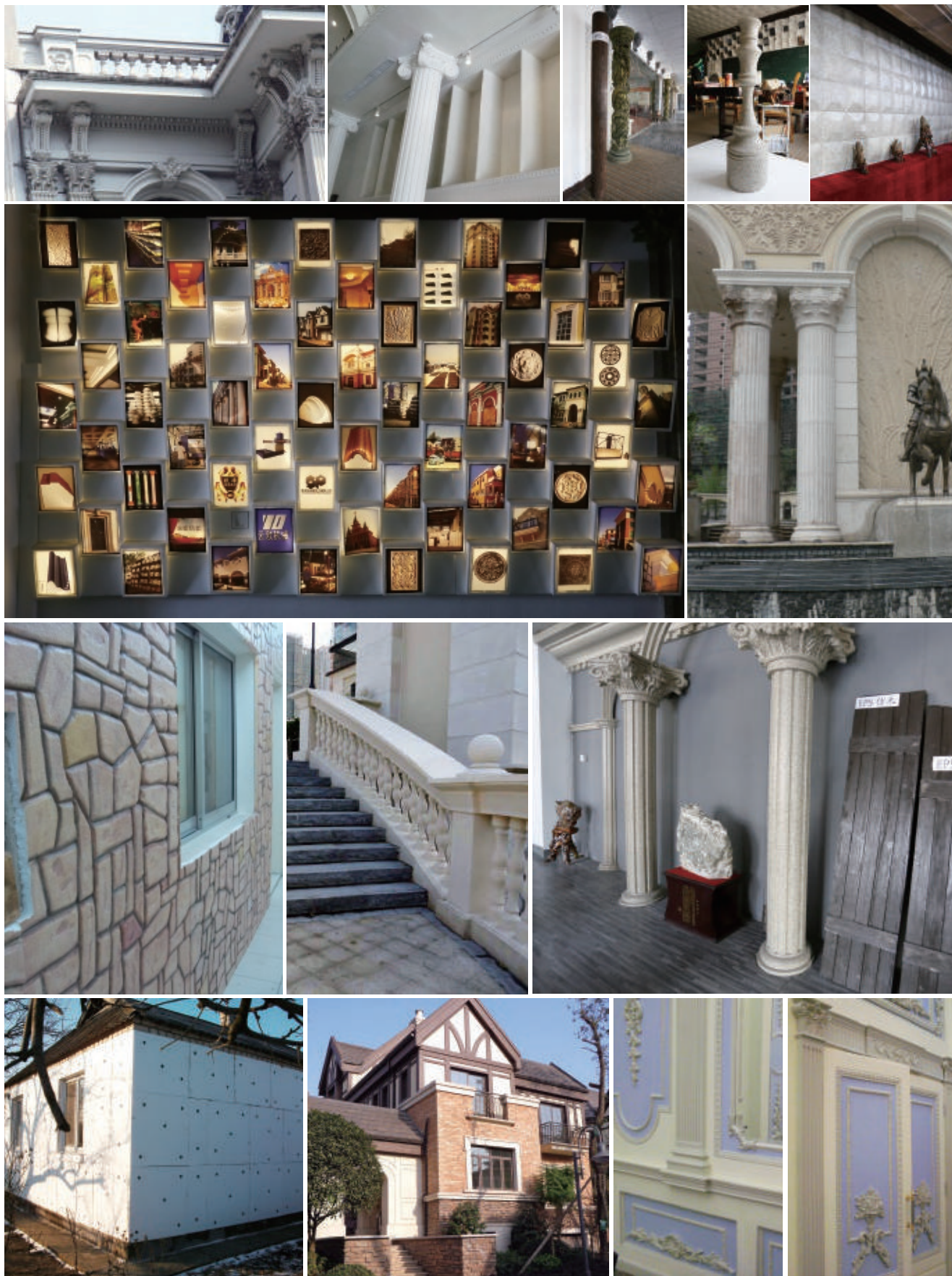
GJ-5500



Products Showcase



Products in Decoration





Contact information



Alibaba store

Hangzhou Epsale Technologies Co.,Ltd.

ADD: 1007# , Block B1,Xigang Development Center,Xihu Science and Technology Park, Hangzhou, Zhejiang Province, China.P.C.310014

TEL:+86-571-81110023

FAX:+86-571-81110031

EMAIL:info@epsale.com

WEBSITE:www.epsale.com